

# Sauna control unit EMOTEC HIC 75

For Finnish sauna, humidity and infrared operation.  
Coloured light control optional.

- Casing: injection moulded plastic upper and lower part
- Control buttons: raised, with epoxy abrasion protection
- Display: jumbo LCD display, with high contrast backlighting
- Control: digital two-point control
- Heating time shut-off: 6 hours
- Humidity control: portional to time
- IR operation: max. 3.3 kW with 5 emitters
- Reheating: 0-120 mins after humidity program
- Low water control: automatic shut down after 2 mins lack of water
- Coloured light operation: max. 4 x 100W (optional with module for coloured light control, ArtNo. 94.2761)

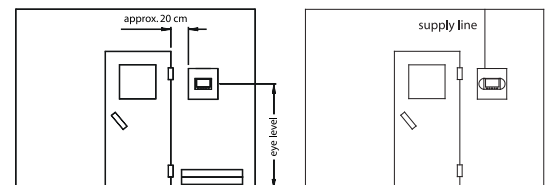
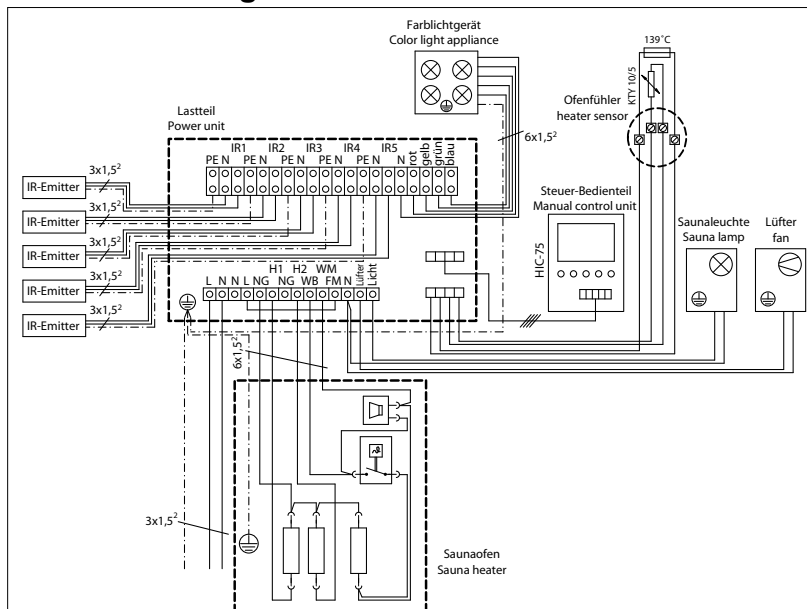


Temperature and humidity preselection, fault signalling. Connection for dimmable cabin light and fan. Safety temperature limiter 139 °C. Light and fan are fuse-protected internally.

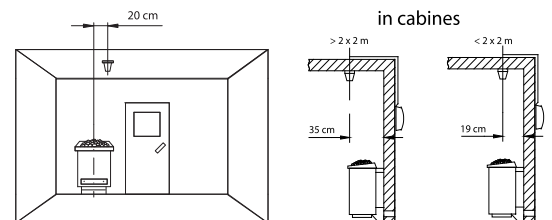
The control unit consists of two parts connected by a control line approx. 2.50 m long. The fig. shows only the terminal part. All electrical connections are made at the power pack.

CE IPx4 PG  
MADE IN GERMANY

## Connection diagram



## Mounting the sensor



Art.-No	electr. connection / capacity	connection for power switch gear to max. 36 kW	Time preselection	Temperature control range in sauna operation	Heating time shut-off	Humidity control	Temperature control range in humidity operation	Temperature control range in Infrared operation	Switching on/off		Dimensions H/W/D in cm	Environmental temperatures	Weight without package approx.
									Cabin lighting	Ventilator			
94.2762	230 V N AC 50 Hz max. 3.3 kW ohm resistive load In humidity operation 2 kW + vaporizer 1 kW	yes	24 h in real time	70 - 110°C	6 h	proportional to time from 30 to 100 %	30 - 70 °C	30 - 80 °C	dimmable max. 100W (only ohm resistive load)	controllable max. 100W max. 500 mA (without starting capacitor)	Terminal 17/18/4 Power pack 24/23/7	-10°C to +40 °C	Terminal 0.45 kg Power pack 1.4 kg

Subject to technical modifications